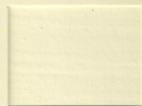
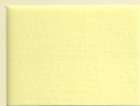
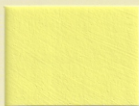


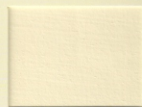
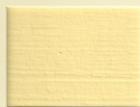
A

B

C



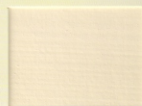
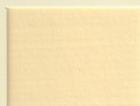
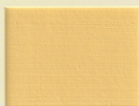
Spinnellgelb (Art. 861)



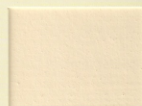
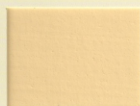
Sonnengelb (Art. 867)



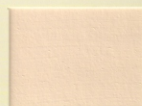
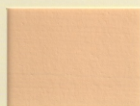
Spinnellorange (Art. 865)



Goldocker, Italien (Art. 821)



Ocker gelb (Art. 802)

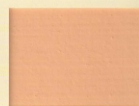
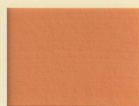
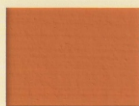


Orangeocker, Provence (Art. 822)

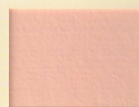
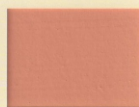
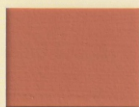
A

B

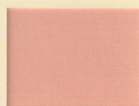
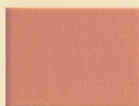
C



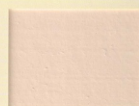
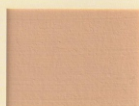
Oxidorange (Art. 823)



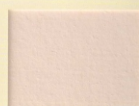
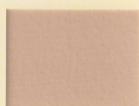
Siena rot, Italien (Art. 824)



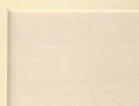
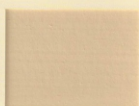
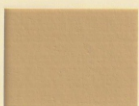
Ocker rot (Art. 803)



Umbra rötlich (Art. 808)



Umbra rotbraun, Italien (Art. 825)

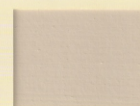


Umbra rehbraun (Art. 805)

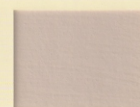
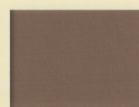
A

B

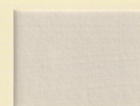
C



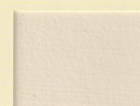
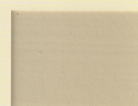
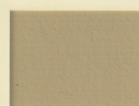
Umbra natur (Art. 915)



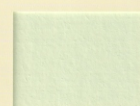
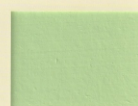
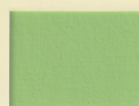
Umbra schwarzbraun (Art. 916)



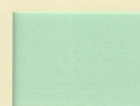
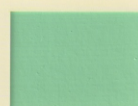
Umbra dunkel, Ardennen (Art. 826)



Umbra grün, Zypern (Art. 827)



Umbra grünlich dunkel (Art. 807)



Spinnellgrün (Art. 864)

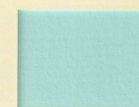
A

B

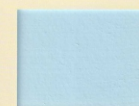
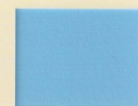
C



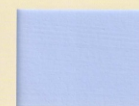
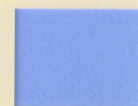
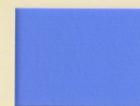
Spinnellmint (Art. 868)



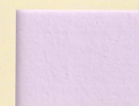
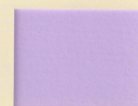
Spinnelltürkis (Art. 862)



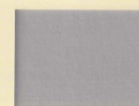
Spinnellblau (Art. 863)



Ultramarin blau (Art. 855)



Ultramarin violett (Art. 856)



Eisenoxidschwarz (Art. 850)